



# Full-Track Power Trowels



**CE** Designed and Produced to CE Standards (EUROPEAN)  
with Patent Technology

## **Q: What Do Contractors Want in a Trowel?**

- ✓ THE ABILITY TO GET A FLATTER FINISH
- ✓ THE ABILITY TO HOLD THE BLADES FIRMLY IN PLACE WITHOUT ANY FLEXING WHEN THE PITCH IS ADJUSTED.
- ✓ THE ABILITY TO HAVE A FLATTER FINISH IN LESS TIME
- ✓ THE ABILITY TO CHANGE BLADES QUICKLY, SEAMLESSLY AND SAFELY
- ✓ THE ABILITY TO ADJUST AND VARY SPEED AND HIGHER RPM WHEN ITS NEEDED.

## **A: THE FULL-TRACK MACHINE**



**WARRANTY**

**Full-Track Series Walk-Behind Trowel Machine Promises:**

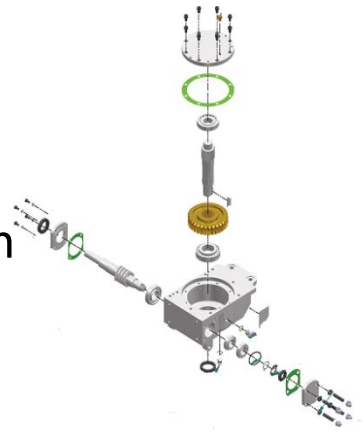


**1YEAR**

- ✓ One-Year Limited Warranty for All Parts Of The Trowel Machine.

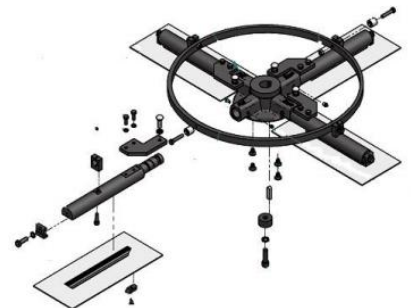
**3YEAR**

- ✓ Three-Year Limited Warranty on Gear Box Unit.



**5YEAR**

- ✓ Five-Year Limited Warranty for Spider Unit.



Designed and Produced to CE Standards (EUROPEAN)  
with Patent Technology



## THE PATENTED FULL-TRACK BLADE SYSTEM

### How Flat? More Flat

#### The Patented Full-Track Blade System Makes the Concrete Surface More Flat

- Special Design for the Variable Speed Clutch Gives Higher Blade Speed (up to 200rpm) and More Convenient Operation.
- Changing Blades More Conveniently with the Single-Bolt Blade Assembling System.
- Double-Safety System Measuring up with European Safety Standard Provides You More Security as the **Full-Track** exceeds the Standard.

### How Rigid is Rigid?

#### More Attention to Detail

- All FT Trowels have a Shock Absorber System Under the Engine which Reduces Most of the Vibration Produced by the Engine and Ensures the Quality of the Trowelling Process.
- The FT System Uses a Rigid Adjustment Pitch Control instead of the Traditional Cable to Avoid Angle Changes of the Blade.

### Quality in Material, YES

#### Top-Ranking Material, Excellent Techniques, Trustful Full-Track Services and Quality!

- The Handle is Made of Best Quality Stainless Steel and is Completely Maintenance Free.
- The Safety Ring is of Special Powder Coating to Avoid Water and Rust.
- The Use of Black Chemistry Process on Material to Harden the Spider Arm and Avoid Rust.
- Blades are Made of High-Quality Spring Steel and Have Longer Life Span. (Up to 3000-4000 M2)



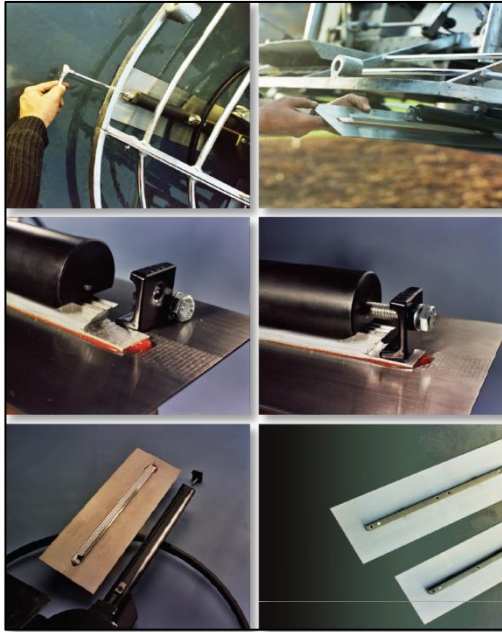
## THE PATENTED FULL-TRACK BLADE SYSTEM

As people working in the concrete industry, we have always been in search of new systems that allow us to trowel industrial concrete floors faster and more efficiently.

After decades of hands on experience in the industry, we know exactly where improvements should be made.

The **Patented Full-Track System** finally puts an end to this search; in fact the new **Full-Track System** represents the ultimate “**evolution**” to the industry.

Our system offers numerous benefits and finally allows you to work faster, easier and safer.

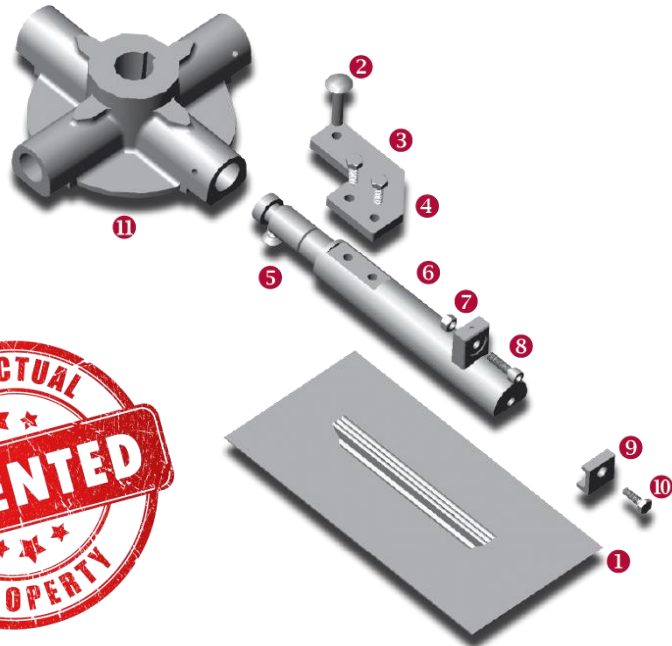


### FULL-TRACK BLADE SYSTEM

1. Polishing Blade
2. Set Screw
3. Security Screw
4. Adjustment Arm
5. Attachment Block + Polishing Blade Screw
6. Arm
7. Dynamic damper
8. Attachment Damper Screw + Ring
9. Quick Coupling Polishing Blade
10. Attachment Screw Quick Coupling
11. Spider



### PATENT SYSTEM



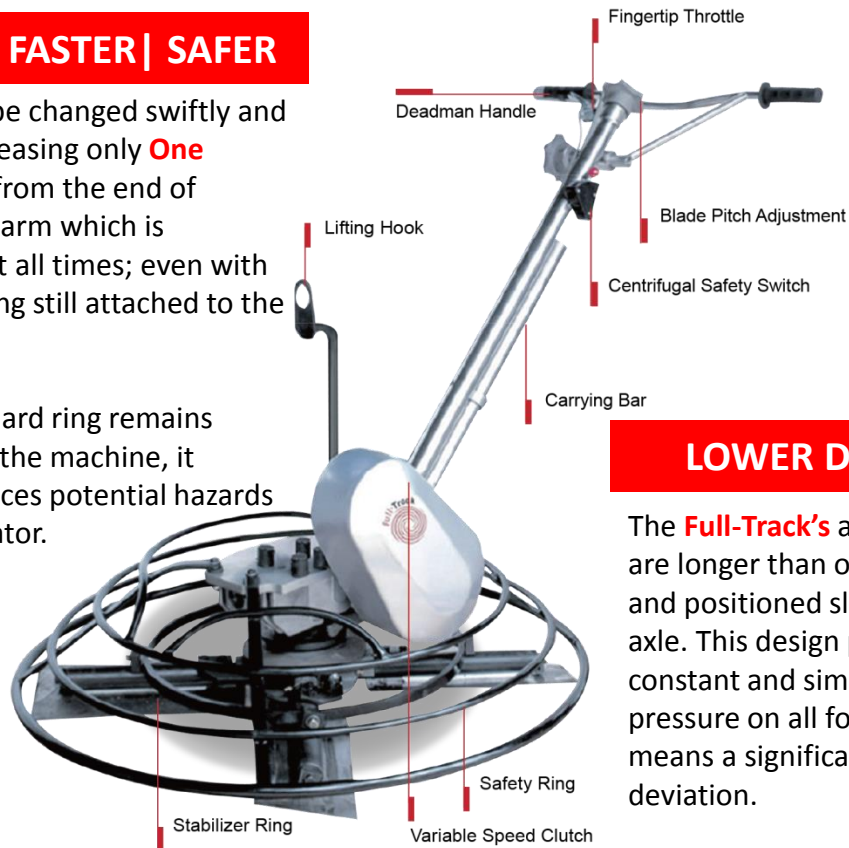
## THE PATENTED FULL-TRACK BLADE SYSTEM



### EASIER | FASTER | SAFER

Blades can be changed swiftly and easily by releasing only **One Single Bolt** from the end of attachment arm which is accessible at all times; even with the guard ring still attached to the machine.

Since the guard ring remains attached to the machine, it greatly reduces potential hazards to the operator.



### LOWER DEVIATION

The **Full-Track's** attachment arms are longer than other machines and positioned slightly out of their axle. This design provides constant and simultaneous pressure on all four blades. This means a significant reduction in deviation.

The **Full-Track's** blades are embedded directly in the attachment arms. As a result the entire machine becomes one solid rigid unit that can create a much flatter surface which exceeds the full disc / pan.

The **Full-Track's** trowel machine arms and spiders are made of best quality steel available and is almost maintenance free.



### DUAL SAFETY SYSTEM

All Full-Track Power Trowels Equipped With Centrifugal Safety Switches Which Shut Off The Engine Within One Quarter Turn Even If The Operator Bypasses The Deadman Handle Switch.

## NEED FOR SPEED



### VARIABLE SPEED CLUTCH

### CORE TECHNIQUE

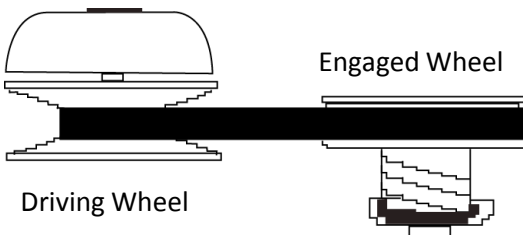
The torque generated by the engine through the **Full-Track** specially designed “**Gear Box**” rotates the clutches and spider arms up to a speed from **40 rpm’s to 200 rpm’s** This speed far exceeds the standard units which run at **90 to 130 rpm’s** maximum. The higher rotating speed combined with a better finishing blade system means flatter surfaces in a less time.

Generally, the clutches of other trowel machines can only make their spider arms rotate at speeds up to **100 - 130 RPM** maximum.

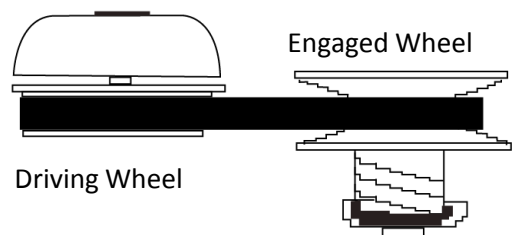
**Full-Track's** special designed variable speed clutch can reach safe operating speeds up to **200 RPM** which greatly reduces finishing time and operator fatigue.

With Full-Track you always minimize job time while obtaining the flattest finish surface.

#### Lower Speed Engaged



#### Higher Speed Engaged





## FLATTER & FASTER / STRENGTH & QUALITY

Full Weight Distribution For Even Finishes

### FLATTER & FASTER

Full-Track **has a PATENTED** Spider Attachment Arm with the Stabilizer Ring mounted to the top of each arm.

All individual arms can not alter its own orientation alone without changing the rest of the other arms and blades.

All of the blades utilizes the full weight of the machine that will cut out all **high spots** and move the excess concrete to the **low spots**, creating a flatter surface.

This reduces the time required to get a flatter surface!

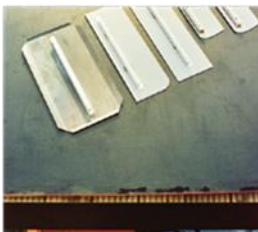
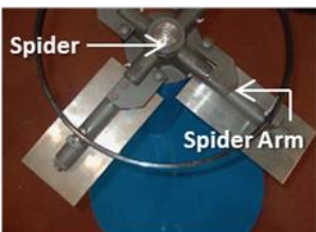
### STRENGTH & QUALITY – MIN MAINTENANCE

The **Spider** and **Attachment** arms are made of very hard steel which is wear resistant. The attachment arms are tough to bend.

If maintained & greased routinely, there will be almost no wear and will continue to fit tightly in the swivel area so the blades will remain flat at all times.

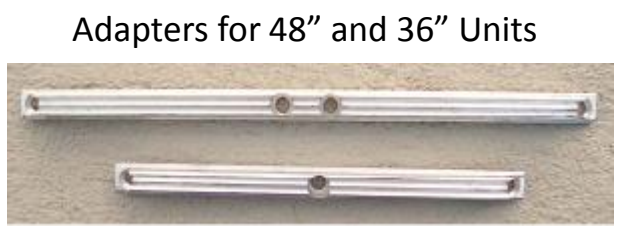
### EASIER, FASTER CHANGE BLADE SYSTEM

With just **One Bolt** at the end of each Spider Arm, the blade can be easily removed, rotated or replaced. In case there is a need to use any other brand of blades in your inventory with Full-Track system, you simply fasten them to our adapters (pictured below) and affix them to your Full-Track machine (Be aware that many other blades are not designed to withstand the Full-Track system's higher spider rpm's).



**FLATTER FINISH IN LESS TIME**

Adapters for 48" and 36" Units







## DOES SIZE MATTER – HOW MANY INCHES

How Does Full-Track Save Up To 20% Of Their Concrete Finishing Time?

### Why the name, “Full-Track” for a concrete finishing machine?

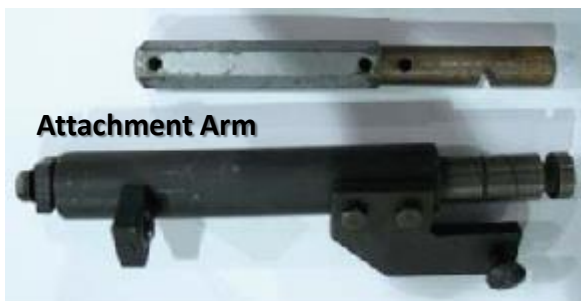
When you are using so called 48 inches (or any other length) machine, generally attachment arms are shorter than the blade length.

Therefore, the end of blade will flex upward and reduce the effective smoothing width.

With **Full-Track** system, the elongated attachment arm supports the full length of the blade so none of the area of the blade is flexed.

The Operator is always sure that he/she is finishing the full width or the **Full-Track of 48 inches** (or any other length).

**This is unique in the world of concrete trowels.**



Full-Track's 32“ attachment arm is even longer and stronger than competitors 36" attachment arm and it has grease grooves all the way around the pivot.



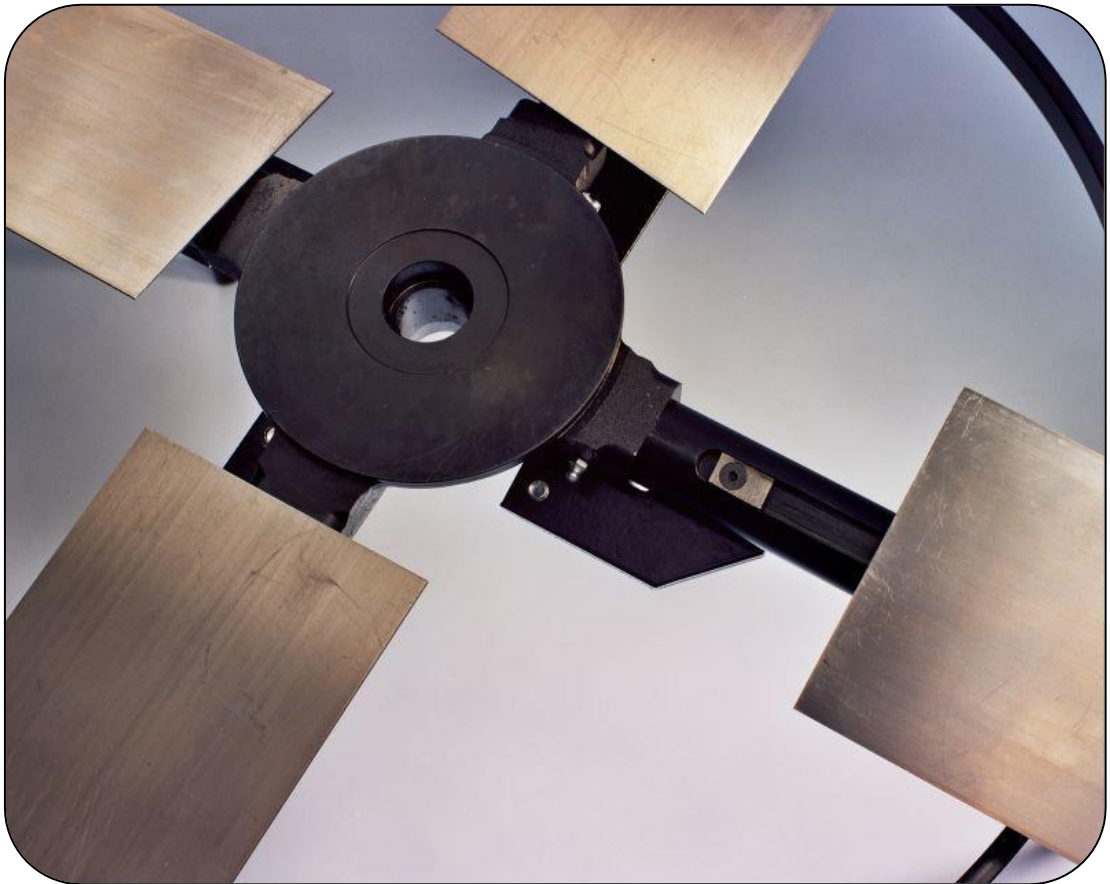
## UNIQUE BLADE SYSTEM

SPECIAL SPRING STEEL

**Full-Track** Blades are made of **Special Spring Steel** which ensures the blades flatness will last longer.

The Spider Attachment Arms can support the blades completely and distribute the weight of the machine evenly over the full blade surface.

Again, finishing the **Full-Track!**



**FULL WEIGHT DISTRIBUTION FOR EVEN FINISHES**



## FEATURES TO KNOW ABOUT

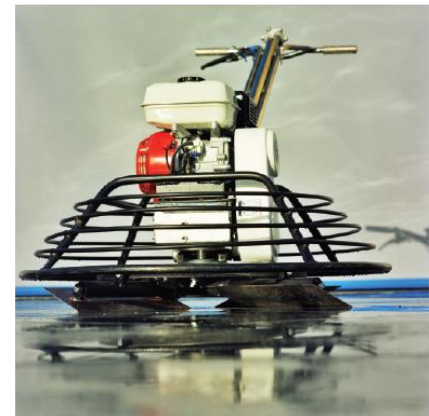
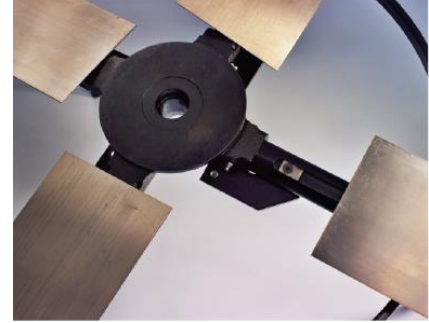
### FULL-TRACK

Full-Track offers a full product line of blades with a competitive price to accommodate any job requirement. If there is a job that requires using the pan/disc, we highly recommend using our floating blades rather than a pan disc. The reason is that every pan disc must have an arch build into its structure so it can move around on the concrete surface and will not “pull the concrete up”. Our floating blades work together with the Full-Track finishing machine through its **Patented Stabilizer Arm**, and will ensure even a flatter surface than use of a regular pan/disc.

In order to ensure the ability to get a flatter finishing surface, on top of our well designed blade system, comes our unique **Blade Pitch Adjustment System**. The Cable used by most of the traditional trowel machines which runs down through the handle bar to control blade pitch has been replaced by us with a **Solid Rod System**. When the blade pitch is adjusted to the proper position, it holds the blades firmly in that position and will not flex like the cable system. By holding the blades at the right operator’s settled pitch, a better and flatter finish is achieved.

To minimize maintenance, all of our connection points in the **Blade Pitch Adjustment System** are enclosed and protected to prevent any cable breaking problems that typically occur.

The optional **Lifting Hook** is designed to attach directly to the gear box with heavy bolts instead of attaching to the engine like others. This setup allows the operator the ease to transport the unit with lifting equipment around the construction site with any assistant without causing damage to the engine.



## SPECIFICATIONS / INFORMATION

TYPE	CAGE	WORK	ENGINE	WEIGHT
FT432	34.4 Inch	32 Inch 80cm	7.0hp	79.85kg
FT436	38.4 Inch	36 Inch 90cm	7.0hp	88.90kg
FT448	50.4 Inch	48 Inch 120cm	9.0hp	109.7kg



## SPECIFICATIONS / INFORMATION

### HANDLE

**FULL-TRACK** machines as standard are equipped with a trapless variable handle in altitude. Both large and smaller users can work unforced because of this.



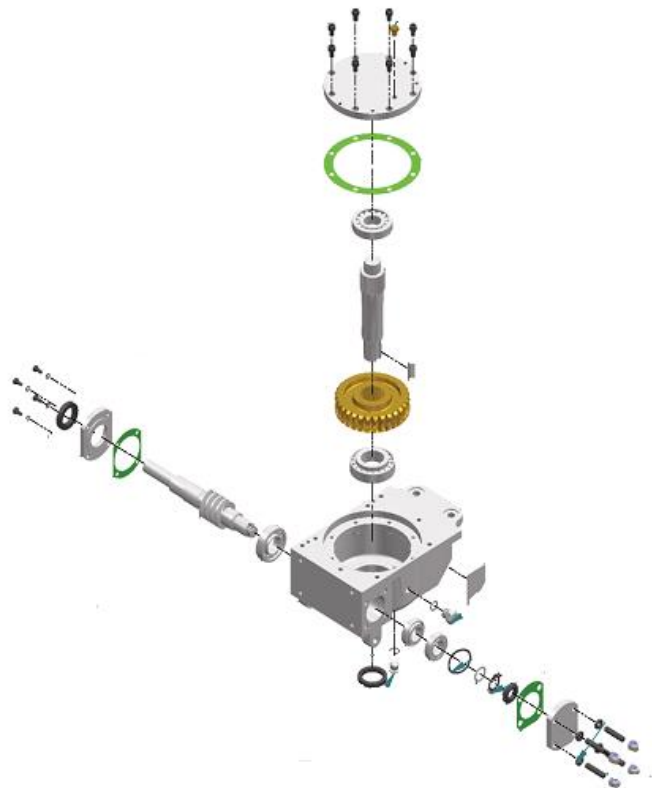
## SPECIFICATIONS / INFORMATION

### GEAR BOX

**FULL-TRACK** Gearbox Casts are manufactured from **High-Quality Aluminium**.

The layering has been calculated on all possible strengths and frictions and therefore early wear is avoided.

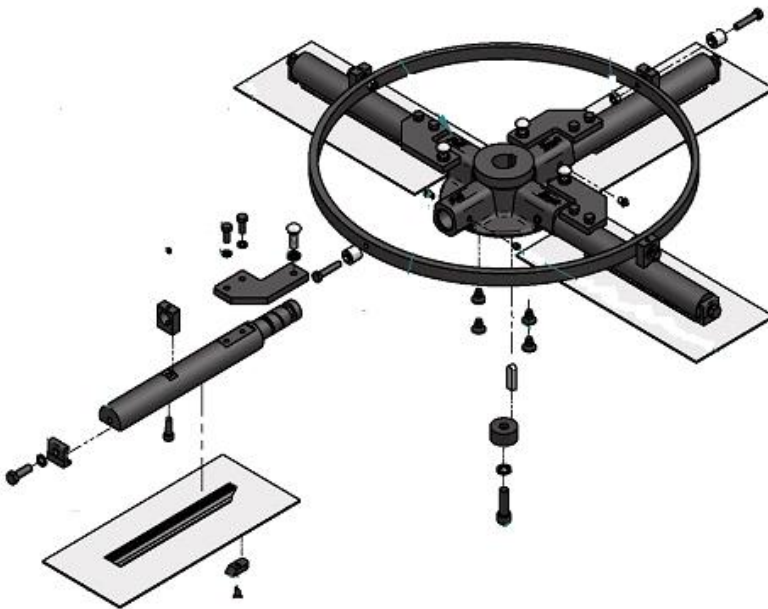
Internal damage breakdown services can be carried out with minimum disruption to operations. The remuneration costs will diminish strongly because of this.



## SPECIFICATIONS / INFORMATION

### SPIDER ARMS

A **FULL-TRACK** Arm is almost the same length as the Blades, so therefore declines have been minimized and the area continues to be preserved.



### OTHERS

*Generally spider arms are 2/3 of the additional plate length.*

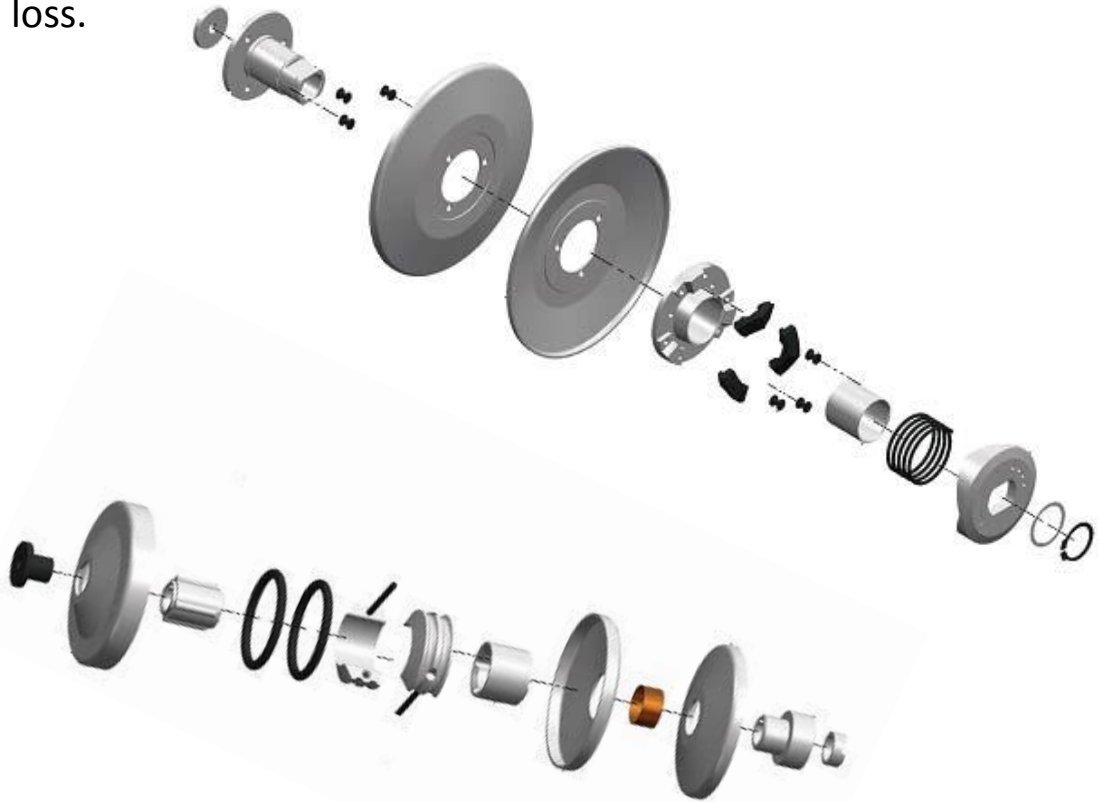
*As a result, after some use, the crossing part of the blades and arms will bend. This translates to loss of work.*

**FULL-TRACK** arms have been eccentrically twisted, which excludes independent moving. The four arms will always move **Simultaneously** which results in small disparities being removed and the flatness of the floor being increased. All spiders and arms have been blackened. Oxidation on arms stuck inside the spider are avoided and therefore subject to minimum maintenance. After years of use the tolerance of the arm in the spider remains as it were at nil. The work suggesting area remains **unchanged**.

## SPECIFICATIONS / INFORMATION

### CLUTCHES

**FULL-TRACK** machines are equipped with a **Variable Speed** clutch on the engine and on the gearbox. These links ensure that both a very low and high RPM can be created without strength loss.



Depending on the speed, lower or higher variable clutches participate and therefore the engine does not give unnecessary strength. A typical RPM amounts to **125 rpm**, but **FULL-TRACK** machines are adjusted to **200 rpm**. This speed results in quicker finishing of floors, which saves the entrepreneur time and money.



## SPECIFICATIONS / INFORMATION

### THE FULL-TRACK ENGINE

Perfectly calculated engine ensures sufficient strength. The Engine has been built around the Full-Track using Chinese Technology from the Chongqing Area of China where OEM Engines of Powerhouse Companies worldwide are produced, manufactured and shipped.



**7.0hp**

**9.0hp**

**11.0hp**

**13.0hp**

## EQUIPMENT FINANCE - AVAILABLE

### FINANCE TO HELP YOU GROW YOUR BUSINESS

**Full -Track** has teamed up with an Equipment Finance Broker to bring you Tailored Finance for your next Trowel Investment .

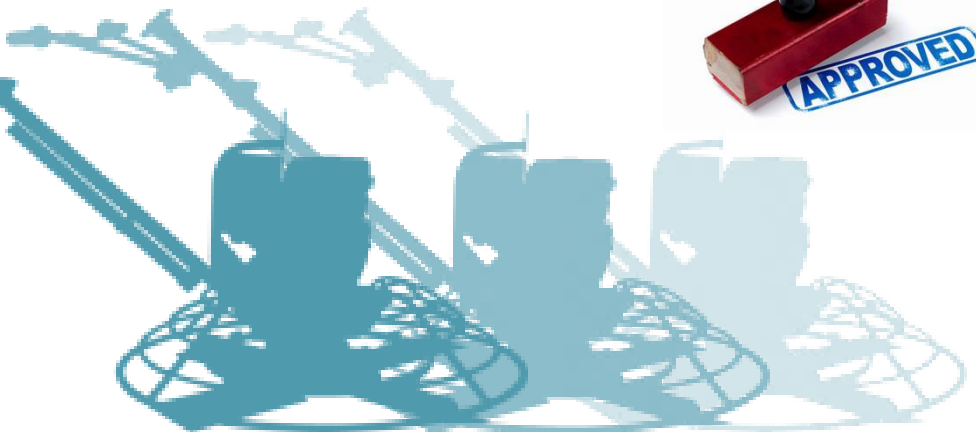
Not only does the **Full-Track** System save you money by using it as your preferred Concrete Trowel Machinery System, but we also know how we can help you further by easily organising Finance to approved candidates.

Let is know if you need help? *The Savings you make with the Full-Track will speak for itself!*

Finance is as easy as **1 2 3**  
with the **Full-Track!**

Walk Behind Power Trowels

EQUIPMENT  
FINANCE



Concrete Trowel Machine's Advantage & Disadvantage					
	Category	Items	Full - Track Trowel	Most Other Brands	Notes
QUALITY	Design & Engineering	Functioning	World Patent	N/A	Designed by people working in the field with latest technology.
	Handle	Main Frame	Stainless Steel Pipe	Painted Iron Pipe	Less Maintainence & Rust Proof without chipping
		Adjustable Handle	Yes	Mostly Yes	Ajustable Handle bar to meet each individual operator's best position.
		Blade Pitch Adjustment	Rod Axle System	Steel Cable	Smooth & accurate blade pitching system keep blade in position ;
		Throttle cable	Stainless steel cable	Steel Cable	Coated stainless steel cable, smoother operation and longer operating life.
	Gear Box	Worm Gear and Shaft	Best Quality Material available	Common materials	Worm Gears; Shafts Axles & Bearings, materials make Gear Box last.
		Shock absorber	Yes	N/A	Significantly reduce engine vibration & release operator's stress
		Clutch	Variable speed	Fixed Speed	Make blade performance under operator's control but not limited by clutches setted speed.
		Lifting Hook	Fixed on the Gear Box	Fixed on the Engine	Right on the point of whole machine's center of gravity instead engine carrying point, provide more stability while transporting
	Spider	Attachment Arms	Made of High-Quality Steel	Wrought Iron	Carbon material is more durable won't break easily.
			Bi-Axle design	Straight	Patterned Bi-Axke attachment arm design created more torque than ordinary straight bar, make all blades strongly tightened.
			Longer Arms	1/2 Length	Extended arm length (almost reach the end of blades) make better contorl of blade action.
			4 Blades Act together	Each arm working independently	Full-Track World Patened Spider System, which provides flatter surfaces.
		Arm Length	Longer Blade Arms	Shorter Blade Arms	Short blade arm ended at the mid-point of the blades, blades can easily bend. Longer blade arms, direct distribute the weight of machine over the whole width of the machine evenly instead heavier load at the end point of the blade, creat more wear at the end of the blades.Extend life of the blades.
		Blade	Aluminum Adaptor Rods	Iron Bar	Specially design Grooved Aluminum Adaptor Rods, easier to clean the cement residue in the blade arms, provide better protection of the blade arms.
Cage	Material	Powder coated	Painted/Galvanized /Chromed	Powder coated cage easier to maintain at much less costs in case of replacemnet required. Well planned space between each guard rail provide safer working space.	
Craftmanship	Supervision	Full - Track own staff	O.E.M.	All Full-Track Trowel machine designed; engineered; manufactured and assembled at Full-Track own facility under direct supervision of Full-Track staff.	
	Quality Control	Same above	O.E.M.		
PERFORMANCE	Better	Blade Action	4 Blades Act Together	Each arm working independently	Full-track World Patterned spider system makes all blades becomes a rigid unit, 4 baldes always pitched at the same angle, all blades have to turn simautaneously, make finish floor tolerance much less . Thus create a better and smoother finish floor.
		Deviation / Tolerance	Low	High	Low deviation/significant reduction of the tolerance level.
					Can use for whole jobsite
	Faster	Blade Speed	Max 200 rpm	Max 100-130 rpm	
		Changing Blades	Single bolt fixed, easy to change/blades are attached directly to the arms.	3-4 bolts	
Easier	Blades changing	Shorter life have possibility that blades need to changed during the job	3-4 bolts, difficult to change		
SAFETY	Auto Shut off	Centrifugal Shut Off			When loose handle, Full-Track will stop engine in <u>max a quarter turn</u> , follow CE Regulation
		Deadman Switch			
	Changing Blade	Single bolt fixed, easy to change/blades are attached directly to the arms.			With the hazard of cutting wrists, hands and fingers/Blades are knives when they are be used and need to be changed.Full-Track has ONE BOLT CHANGE SYSTEM!!



**CONTACT US**



**FULL-TRACK AUSTRALIA** For  
Sales, Parts & Warranties  
**Contact:** 02 9055 0030  
[wp.orders@oriem.com.au](mailto:wp.orders@oriem.com.au)